

WX08LP Low-profile LHD



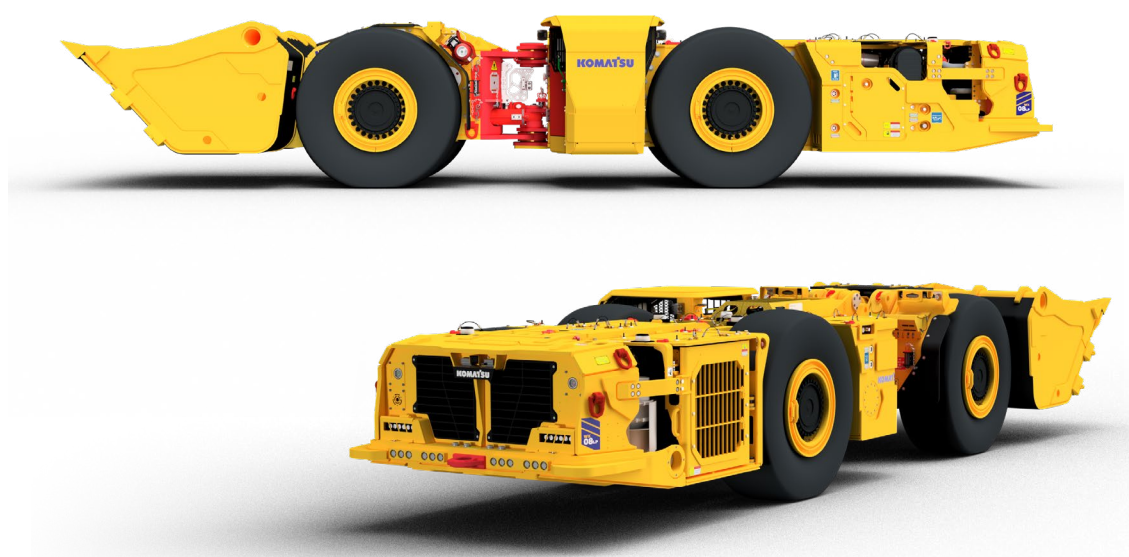
Safety



Reliability



Productivity



Indicative illustration only — machine design will vary.

Capacities

Tramming capacity	8 000 kg
Bucket volume	4.0 m ³
Operating weight	23 807 kg

Engine

Engine rated power	178 kW
--------------------	--------

WX08LP

Capacities

Tramming capacity	8 000 kg
Hydraulic breakout force, lift	17 064 kg
Hydraulic breakout force, tilt	18 776 kg
SAE breakout force	18 776 kg
SAE static tipping load	11 959 kg
Standard bucket volume	4.0 m ³

Weights

Operating weight	23 807 kg
Total loaded weight	31 807 kg

Axle weight without load

Front axle	10 600 kg
Rear axle	13 207 kg

Axle weight with load

Front axle	22 819 kg
Rear axle	8 988 kg

Driving speeds: unloaded (km/h)

Grade (%)	0	5	10	12.5	14.3	20
1st gear	3.9	3.5	3.3	3.2	3.2	3.0
2nd gear	7.7	6.6	6.5	5.7	5.2	3.3
3rd gear	18.0	15.5	7.7	4.0		
4th gear						

Driving speeds: loaded (km/h)

Grade (%)	0	5	10	12.5	14.3	20
1st gear	3.9	3.5	3.2	3.2	3.1	3.1
2nd gear	7.6	6.6	6.1	5.7	5.0	3.6
3rd gear	18.0	11.0				
4th gear						

Bucket motion times (+/- 1 s)

Dump time	5.0 s
Raising time	5.0 s
Lowering time	3.7 s

Articulation motion times (+/- 1 s)

Turning time, right	2.5 s
Turning time, left	2.5 s

Electrical equipment

Alternator	24VDC, 80A
Batteries	2 x 12V, 105Ah
Starter	4 kW, 24V heavy-duty
Driving and working lights	4 forward, 4 rear - LED type

Control system

Symbols, critical alarms and warning lights on display. Audible and visible alarms.	
Instrument panel	Digital display
	Illuminated buttons
	Camera display
	Engine diagnostic display

Structural

Front and rear frames	Welded steel construction, modular design
Material	S355JR

Powertrain

Engine	Deutz TCD 2013L06 2V
Output	178 kW @ 2200 RPM
Displacement	7.2 L
No. of cylinders	6
Cooling type	Liquid-cooled
Certification	EPA Tier 3/EU Stage IIIA
Exhaust system	DOC, silencer and fume diluter
Fuel tank capacity	200 L
Torque converter	Integrated into transmission
Transmission	Dana T14
Shifting	Powershift, manual hydrodynamic
Forward/reverse speeds	4 forward/4 reverse
Axles	Kessler
Front and rear	D91
Differentials, front	Open
Differentials, rear	No-spin
Brakes	Multi-disc spring brake SAHR, hydraulic actuated, externally cooled
Rear axle oscillation angle	6 degrees ±1 degree
Tires	20.50-25, bias, 20 ply, slick tires, L-5s

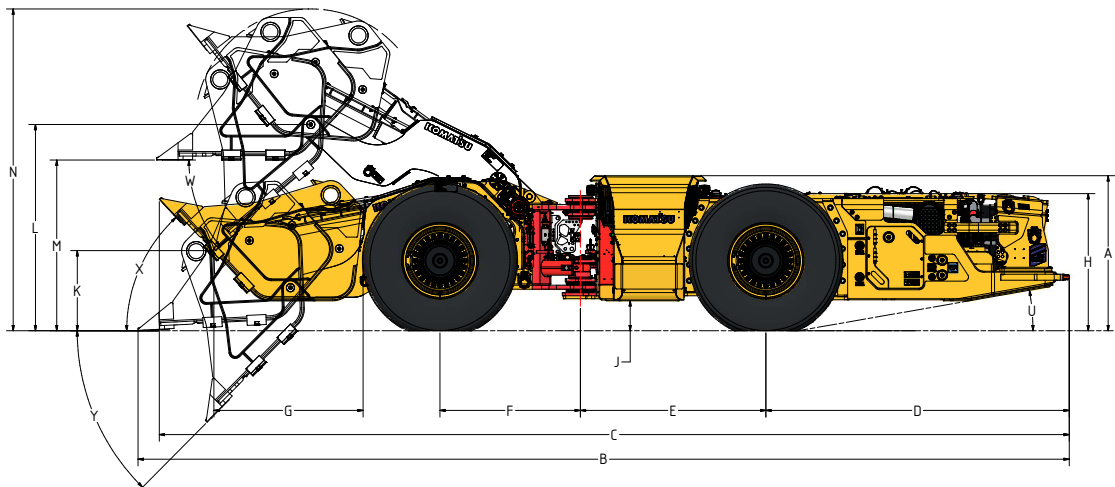
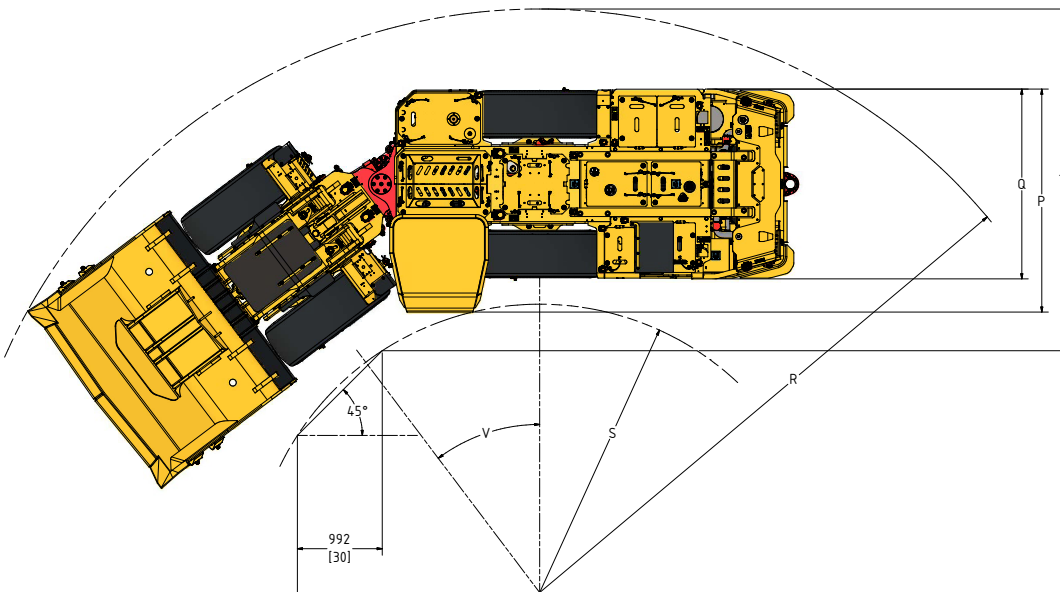
* As applications vary, local tire supplier should be consulted for appropriate tire.

Hydraulics

Fixed displacement gear pumps with a closed center dump and hoist valve. Oil flow from the steering pump is prioritized to improve cycle time. Steering is articulated and achieved with separate closed centre steering valve.	
Bucket/boom control	One double axis pilot hydraulic joystick
Steering control	One single axis pilot hydraulic joystick
Bucket dump cylinder	One single stage, double acting cylinder with rod guard
Boom hoist cylinder	Two single stage, double acting cylinders
Steer cylinder	Two single stage, double acting cylinders
Hydraulic tank volume	185 L

Brake system

Service brakes are spring-applied, hydraulically released, wet multi-disc brakes on all four wheel ends. The SAHR brakes also function as emergency and parking brakes.



Overall dimensions

A	Height - top of canopy	1 550 mm	N	Height - bucket raised	3 214 mm
B	Length - overall	9 286 mm	P	Width - overall	2 611 mm
C	Length - tramming	9 074 mm	Q	Width - rear frame	2 222 mm
D	Length - rear axle to bumper	3 025 mm	R	Turning radius - outside	6 831 mm
E	Length - rear axle to articulation	1 850 mm	S	Turning radius - inside	3 375 mm
F	Length - front axle to articulation	1 400 mm	T	Clearance	4 000 mm
G	Length - reach	1 489 mm	U	Departure angle	10 degrees
H	Height - top of hood	1 370 mm	V	Turn angle	40 degrees
J	Height - ground clearance	300 mm	W	Dump angle	40 degrees
K	Height - dump clearance	801 mm	X	Rollback angle	47 degrees
L	Height - bucket pin	2 061 mm	Y	Dig angle	45 degrees
M	Height - bucket lip	1 706 mm			

Standard and optional equipment

Operator's compartment	●
Adjustable seat, forward, backward, height and suspension	●
Door/seatbelt interlock (applies brakes, block steering)	●
Open cabin with emergency exit	●
Adjustable joystick controls	●
Comfortable base mounted brake and accelerator pedals	●
Fabricated instrument cluster with digital display	●
Ergonomic footbox with expanded legroom	●
FOPS certification according to EN ISO 3449	●
ROPS certification according to EN ISO 3471	●
Electrical gearing and mechanical brake mechanism	●
Three-point contact cabin access system	●
4.0 m ³ bucket with hardened plate lip	●
24V analogue and Canbus hybrid control system	●
Articulation and boom safety lockout pins	●
Electronic engine protection with diagnostic display and plug	●
LCD screen with illuminated buttons	●
Condition monitoring software system	●
Battery and starter isolator	●
Separate brake flushing and cooling	●
Back-up alarm/reverse siren	●
Cameras (back up and blind side facing)	●
Cabin door brake and steering interlock	●
Adjustable joysticks	●
Emergency stop button in cabin	●
Certified ROPS/FOPS open cabin	●
Front and rear directional working lighting	●
DOC, silencer and fume diluter	●
Ground level service points	●
Fuel, hydraulic and brake oil quick filling	●
Manual and centralized greasing points	●
PDS interface wiring	●
Portable fire extinguisher - 9 kg	●
Exhaust outlet insulation wrap	●
Centralized test points	●
Transmission, working hydraulics and up-box cooling	●
Swing out secondary cooler	●
Three-piece rims	●
Pinch bar and wheel spanner holders	●
Piston accumulators	●
PSD air filter with blockage indicator	●
Gear pump with pilot hydraulic controls	●
Power-on beacon/strobe light	●
EMR electronic engine control	●
JIC, ORFS and SAE hydraulic fittings	●

18.00-25, bias, 20 ply, slick tires, L-5s	○
Articulation barriers	○
Automatic greasing system via hydraulic steering	○
Automatic or manual fire suppression	○
Aux jump start receptacle	○
Cabin air blower	○
Cabin rock guards	○
Double-wall insulated DPF exhaust system	○
Limited slip differentials	○
PDS level 9 system	○
Rear emergency stop	○
Red and green front and rear navigation lights	○
Brake lights	○
Spare wheel	○
Tire-foam filling	○
Turbo heat shield	○
Exhaust blanket	○
Wheel chocks	○
Red, green and yellow reflective tape	○
Emergency steering	○
Tire pressure monitoring (TPMS)	○
Cap lamp, rescue pack and document holder	○

● standard equipment

○ optional equipment

Bucket options

Hardened manganese lips

Ground engagement tools

Product designs, specifications and/or data in this document are provided for information purposes only and are not warranties of any kind. Product designs and/or specifications may be changed at any time without notice. The only warranties that apply to sales of products and services are Komatsu's standard written warranties, which will be furnished upon request.

Komatsu and other trademarks and service marks used herein are the property of Komatsu Ltd. Or its subsidiaries, or the respective owners or licensees.

KOMATSU

komatsu.com

