

## WX05LP Low-profile LHD



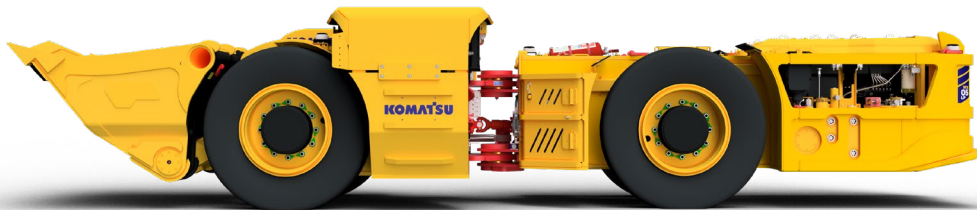
Safety



Reliability



Productivity



*Indicative illustration only — machine design will vary.*

### Capacities

Tramming capacity	5 000 kg
Bucket volume	1.8 m <sup>3</sup>
<b>Operating weight</b>	
Standard: air-cooled	16 770 kg
Optional: water-cooled	16 370 kg

### Engine options

<b>Engine rated power</b>	
Standard: air-cooled	88 kW
Optional: water-cooled	97 kW

## Capacities

Tramming capacity	5 000 kg
Hydraulic breakout force, lift	8 848 kg
Hydraulic breakout force, tilt	12 457 kg
SAE breakout force	12 457 kg
SAE static tipping load	7 973 kg
Standard bucket volume	1.8 m <sup>3</sup>

## Weights: air-cooled

Operating weight	16 770 kg
Total loaded weight	21 730 kg

## Axle weight without load

Front axle	9 130 kg
Rear axle	7 640 kg

## Axle weight with load

Front axle	14 820 kg
Rear axle	6 910 kg

## Weights: water-cooled

Operating weight	16 370 kg
Total loaded weight	21 330 kg

## Axle weight without load

Front axle	8 930 kg
Rear axle	7 440 kg

## Axle weight with load

Front axle	14 620 kg
Rear axle	6 710 kg

## Driving speeds: standard, air-cooled, unloaded (km/h)

Grade (%)	0	5	10	12.5	14.3	20
1st gear	3.9	3.7	3.5	3.3	3.3	3.1
2nd gear	7.3	6.8	6.3	5.9	5.5	3.9
3rd gear	19.6	13.4	2.2			
4th gear						

## Driving speeds: standard, air-cooled, loaded (km/h)

Grade (%)	0	5	10	12.5	14.3	20
1st gear	3.5	3.4	3.2	3.1	3.0	2.9
2nd gear	6.5	6.3	5.5	5.1	4.7	2.6
3rd gear	19.5	9.0				
4th gear						

## Bucket motion times (+/- 1 s)

Dump time	5.5 s
Raising time	4.8 s
Lowering time	3.0 s

## Articulation motion times (+/- 1 s)

Turning time, right	6.0 s
Turning time, left	6.0 s

## Electrical equipment

Alternator	24VDC, 80A (air-cooled) 24VDC, 120A (water-cooled)
Batteries	2 X 12V, 105Ah
Starter	4 kW, 24V heavy duty
Driving and working lights	5 forward, 5 rear - LED type

## Control system

Symbols, critical alarms and warning lights on display. Audible and visible alarms.	
Instrument panel	Analogue relay logic 24V with LED lights
Optional	CANBUS (B&R and Nerospec)

## Structural

Front and rear frames	Welded steel construction
Material	S355JR

## Powertrain

<b>Engine (standard)</b>	Deutz BF6L914F
Output	88 kW @ 2300 RPM
Displacement	6.5 L
No. of cylinders	6
Cooling type	Air-cooled
Certification	EPA Tier 2/EU Stage II
Exhaust system	DOC, silencer and fume diluter
<b>Engine (optional)</b>	Cummins QSB4.5
Output	97 kW @ 2300 RPM
Displacement	4.5 L
No. of cylinders	4
Cooling type	Liquid-cooled
Certification	EPA Tier 3/EU Stage IIIA
Exhaust system	DOC, silencer and fume diluter
Fuel tank capacity	150 L
Torque converter	Dana C272
<b>Transmission</b>	Dana RT20000, modulation
Shifting	Powershift, manual hydrodynamic
Forward/reverse speeds	3 forward/3 reverse
<b>Axles</b>	Kessler
Front and rear	D81
Differentials, front	Open
Differentials, rear	No-spin
<b>Brakes</b>	Multi-disc spring brake SAHR, hydraulic actuated, externally cooled
Rear axle oscillation angle	8 degrees ±1 degree
Tires	12.00-24, bias, 20 ply, slick tires, L-5s

\* As applications vary, local tire supplier should be consulted for appropriate tire.

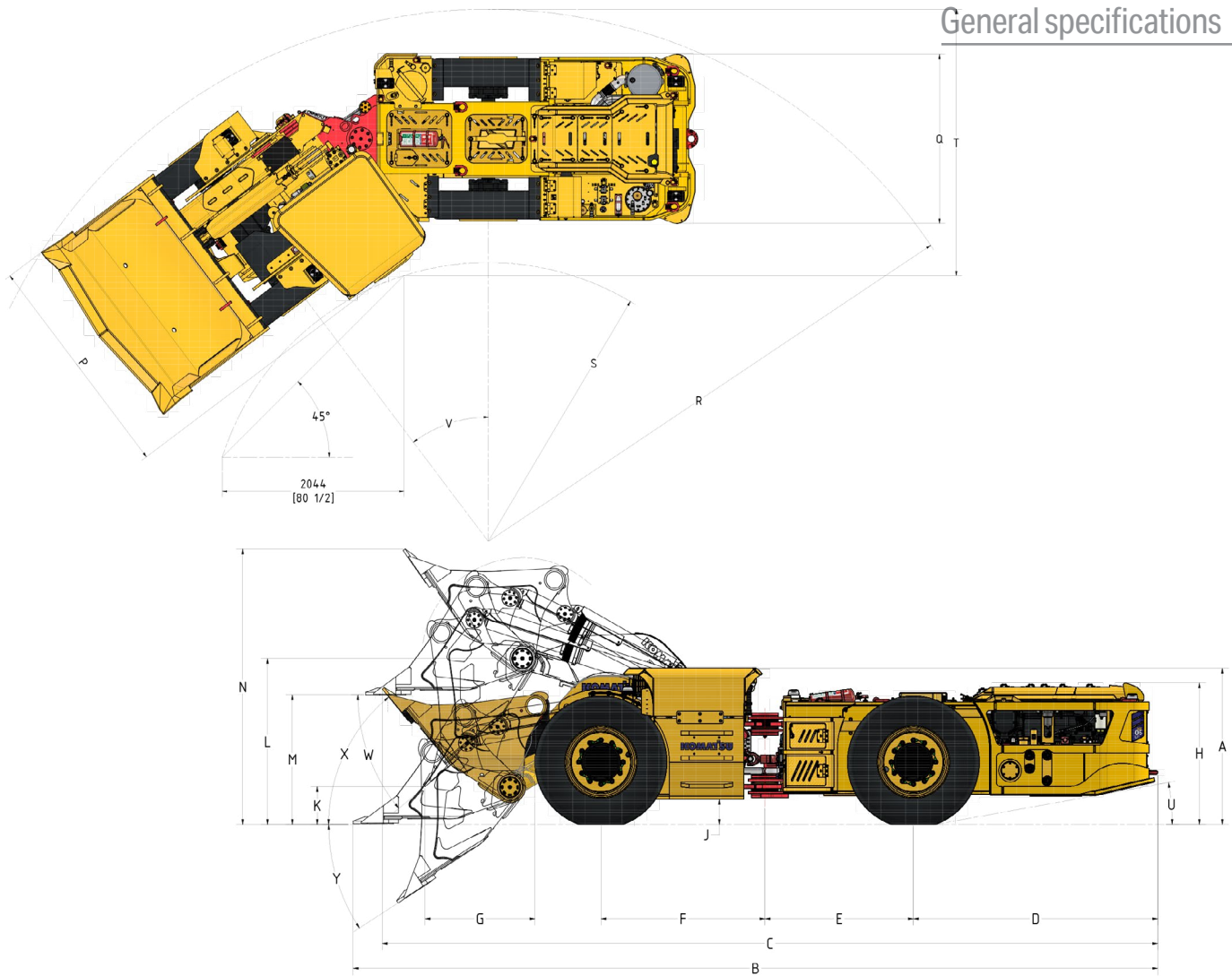
## Hydraulics

Fixed displacement gear pumps with an open center dump and hoist valve. Oil flow from the steering pump is prioritized to improve cycle time. Steering is articulated and achieved with orbitrol steering valve.	
Bucket/boom control	Manual hydraulic lever control
Steering control	Orbitrol hydraulic steering valve
Bucket dump cylinder	One single stage, double acting cylinder with rod guard
Boom hoist cylinder	One single stage, double acting cylinder
Steer cylinder	One single stage, double acting cylinder
Hydraulic tank volume	190 L

## Brake system

Service brakes are spring-applied, hydraulically released, wet multi-disc brakes on all four wheel ends. The SAHR brakes also function as emergency and parking brakes

## General specifications



### Overall dimensions: air-cooled

A	Height - top of canopy	1510 mm
B	Length - overall	7671 mm
C	Length - tramming	7390 mm
D	Length - rear axle to bumper	2260 mm
E	Length - rear axle to articulation	1434 mm
F	Length - front axle to articulation	1584 mm
G	Length - reach	1754 mm
H	Height - top of hood	1321 mm
J	Height - ground clearance	245 mm
K	Height - dump clearance	361 mm
L	Height - bucket pin	1569 mm
M	Height - bucket lip	1219 mm
N	Height - bucket raised	2623 mm
P	Width - overall	2552 mm
Q	Width - rear frame	1904 mm
R	Turning radius - outside	5664 mm
S	Turning radius - inside	2779 mm
T	Clearance	3000 mm
U	Departure angle	10 degrees
V	Turn angle	40 degrees
W	Dump angle	38 degrees
X	Rollback angle	51 degrees
Y	Dig angle	33 degrees

### Overall dimensions: water-cooled

A	Height - top of canopy	1510 mm
B	Length - overall	7738 mm
C	Length - tramming	7445 mm
D	Length - rear axle to bumper	2232 mm
E	Length - rear axle to articulation	1434 mm
F	Length - front axle to articulation	1584 mm
G	Length - reach	1754 mm
H	Height - top of hood	1321 mm
J	Height - ground clearance	245 mm
K	Height - dump clearance	361 mm
L	Height - bucket pin	1569 mm
M	Height - bucket lip	1219 mm
N	Height - bucket raised	2623 mm
P	Width - overall	2552 mm
Q	Width - rear frame	1939 mm
R	Turning radius - outside	6019 mm
S	Turning radius - inside	3142 mm
T	Clearance	3000 mm
U	Departure angle	10 degrees
V	Turn angle	40 degrees
W	Dump angle	38 degrees
X	Rollback angle	51 degrees
Y	Dig angle	33 degrees

# Standard and optional equipment

Operator's compartment	
Comfortable T-back seat with two-point seatbelt	●
Door/seatbelt interlock (applies brakes, block steering)	●
Open cabin with emergency exit	●
Manual multifunction control levers	●
Comfortable base-mounted brake and accelerator pedals	●
Fabricated instrument cluster	●
Ergonomic footbox with expanded legroom	●
FOPS certification according to EN ISO 3449	●
ROPS certification according to EN ISO 3471	●
Mechanical gearing and brake mechanism	●
Open door retainer	●
No hydraulic hoses in the cabin	●
Replaceable canopy	●
Armrests on the door and fender	●
1.8 m <sup>3</sup> bucket with hardened plate lip	●
24V analogue control system	●
Articulation and boom safety lockout pins	●
Engine protection, belt, temperature and pressure	●
Separate brake flushing and cooling	●
Battery and starter isolator	●
Back-up alarm/reverse siren	●
Cabin door brake and steering interlock	●
Emergency stop button in cabin	●
Certified ROPS/FOPS open cabin	●
Front and rear directional working lighting	●
DOC, silencer and fume diluter	●
Ground level service points	●
Fuel, hydraulic and brake oil quick filling	●
Manual and centralized greasing points	●
PDS interface wiring	●
Portable fire extinguisher - 9 kg	●
Exhaust outlet insulation wrap	●
Centralized test points	●
Transmission cooling	●
Two-piece rims	●
Pinch bar and wheel spanner holders	●
Diaphragm accumulators	●
PSD air filter with blockage indicator	●
Gear pumps with mechanical hydraulic control	●
Power-on beacon/strobe light	●
Mechanical engine control	●
JIC and SAE hydraulic fittings	●

14.00-24, bias, 20 ply, slick tires, L-5s	○
Air ride suspension seat	○
Articulation barriers	○
Automatic greasing system via hydraulic steering	○
Automatic or manual fire suppression	○
Aux jump start receptacle	○
Back-up camera	○
Cabin rock guards	○
Condition monitoring software system	○
Digital teleremote control	○
Electric gear shift	○
Double wall insulated DPF exhaust system	○
Joystick operated dump and hoist valve with piston pump	○
LCD screen	○
Limited slip differentials	○
PDS level 9 system	○
Piston accumulators	○
Rear emergency stop	○
Red and green front and rear navigation lights	○
Brake lights	○
Sentinel engine protection	○
Spare wheel	○
Tire-foam filling	○
Turbo heat shield	○
Exhaust blanket	○
Wheel chocks	○
Red, green and yellow reflective tape	○
EMR electronic engine control	○
Engine diagnostic display and plug in cabin	○
Cap lamp, rescue pack and document holder	○

- standard equipment
- optional equipment

## Bucket options

2.2 m <sup>3</sup> bucket with hardened plate lip
Hardened manganese lips
Ground engagement tools

Product designs, specifications and/or data in this document are provided for information purposes only and are not warranties of any kind. Product designs and/or specifications may be changed at any time without notice. The only warranties that apply to sales of products and services are Komatsu's standard written warranties, which will be furnished upon request.

Komatsu and other trademarks and service marks used herein are the property of Komatsu Ltd. Or its subsidiaries, or the respective owners or licensees.

# KOMATSU

[komatsu.com](https://www.komatsu.com)

